

GROWTH IN THE COELIAC DISEASE OF THE CHILD

M. Bessahraoui, M.Oussaleh

Department of Medecine Oran, ALGERIA

bessahraoui.mimouna@yahoo.fr

The aim of the present study was to evaluate growth of celiac disease (CD) patients.

Results

Growth was significantly more delayed in CD patients (103 girls,92 boys) than Sempe, Pedron subjects.

However, evident catch-up growth was noted between the 18 and 21 years age (103 CD girls and 92 CD boys CD).

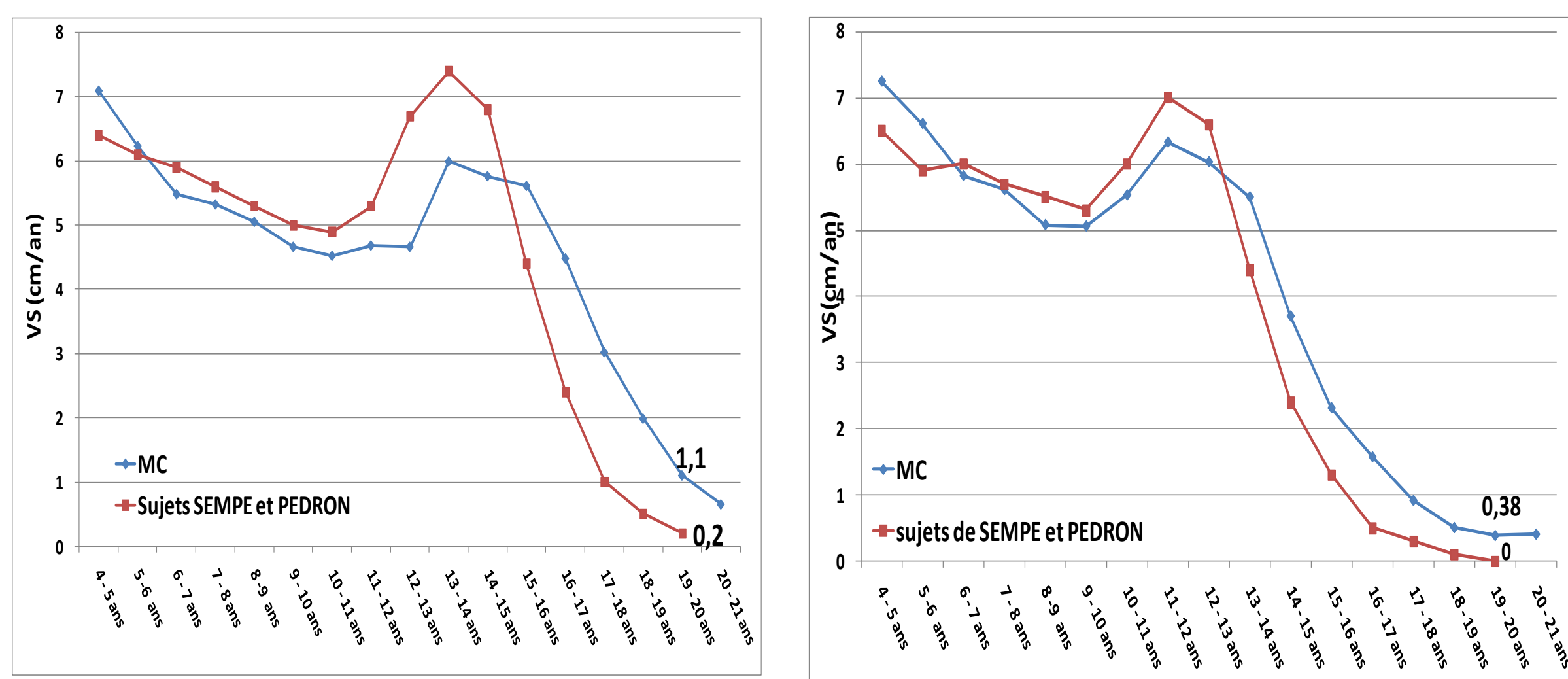
Subjects and methods

➤Growth was assessed by:

✓-Longitudinal study, compare coeliac disease growth to Sempe, Pedron growth.

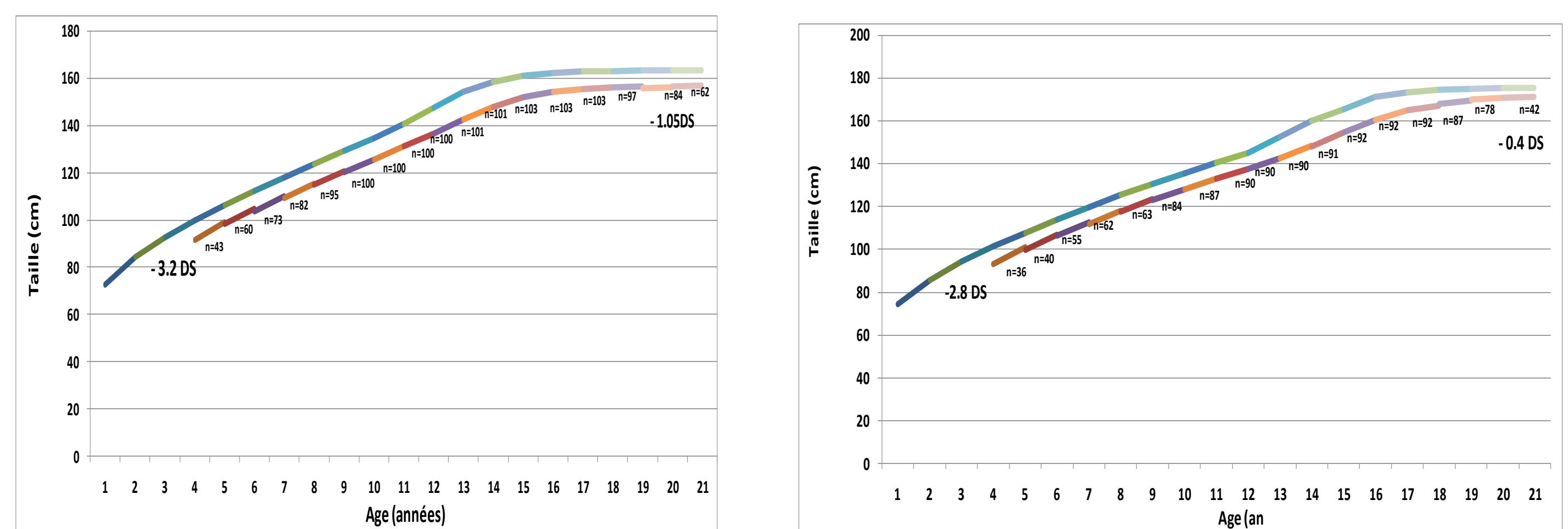
✓-Semi longitudinal case-control study. Controls (celiac brothers and sisters).

growth speed(cm / year) coeliac subjects compared with Sempe, Pedron subjects.



Growth speed(cm / year) girls coeliac subjects compared with girls Sempe, Pedron
Growth speed(cm / year) boys coeliac subjects compared with boys Sempe, Pedron

Growth in CD patients (103 girls,92 boys) compared with Sempe, Pedron subjects.



Growth in girls CD (n =103) compared with SEMPE et PEDRON subjects

Growth in boys CD (n =92) compared with SEMPE et PEDRON subjects

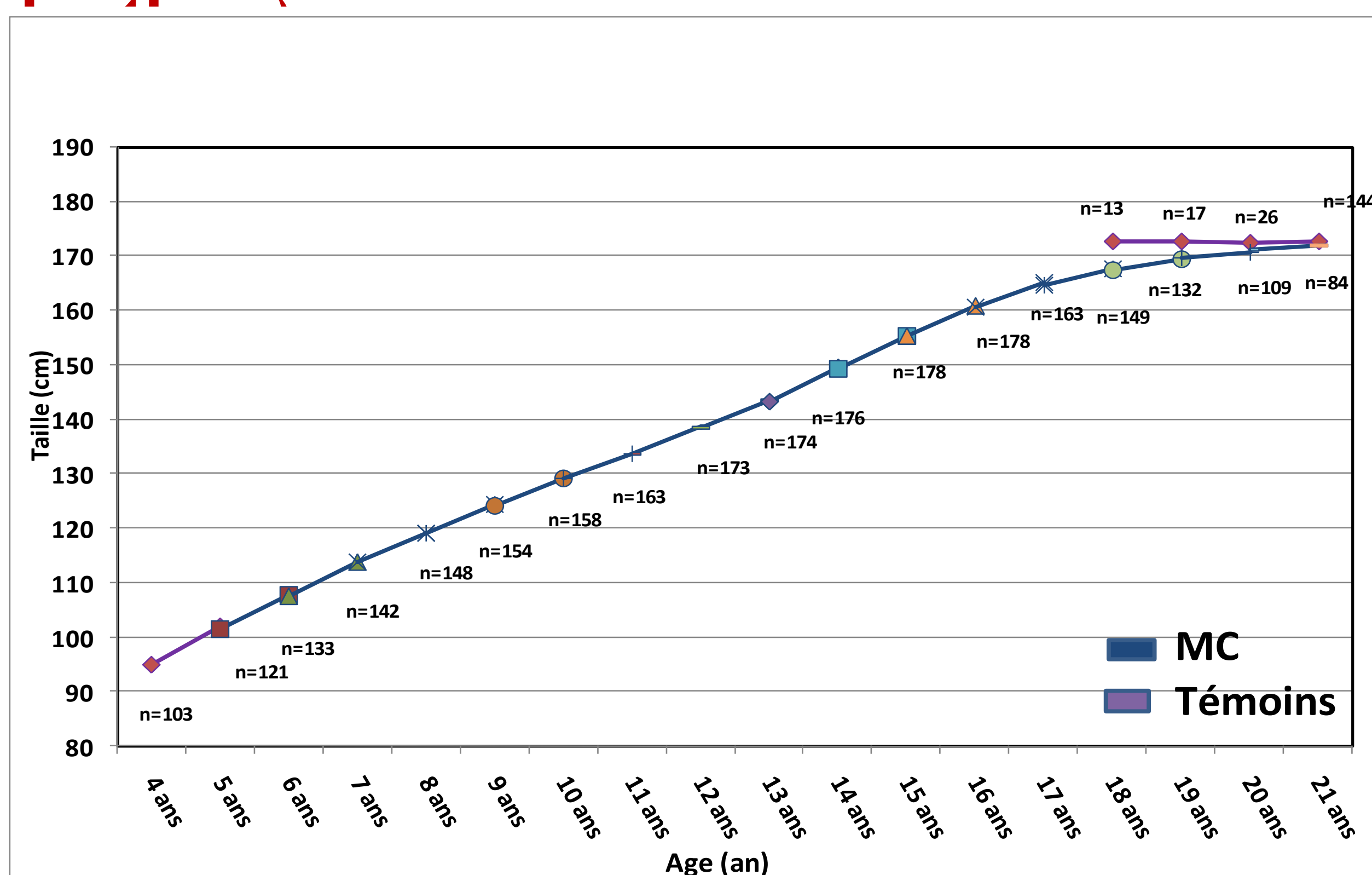
Semi-longitudinal study of growth

The mean final height was: 158, 42 ± 6, 3 cm (269 women CD) vs 162, 17 ± 6, 3 cm (193 controls :p<0, 0001).

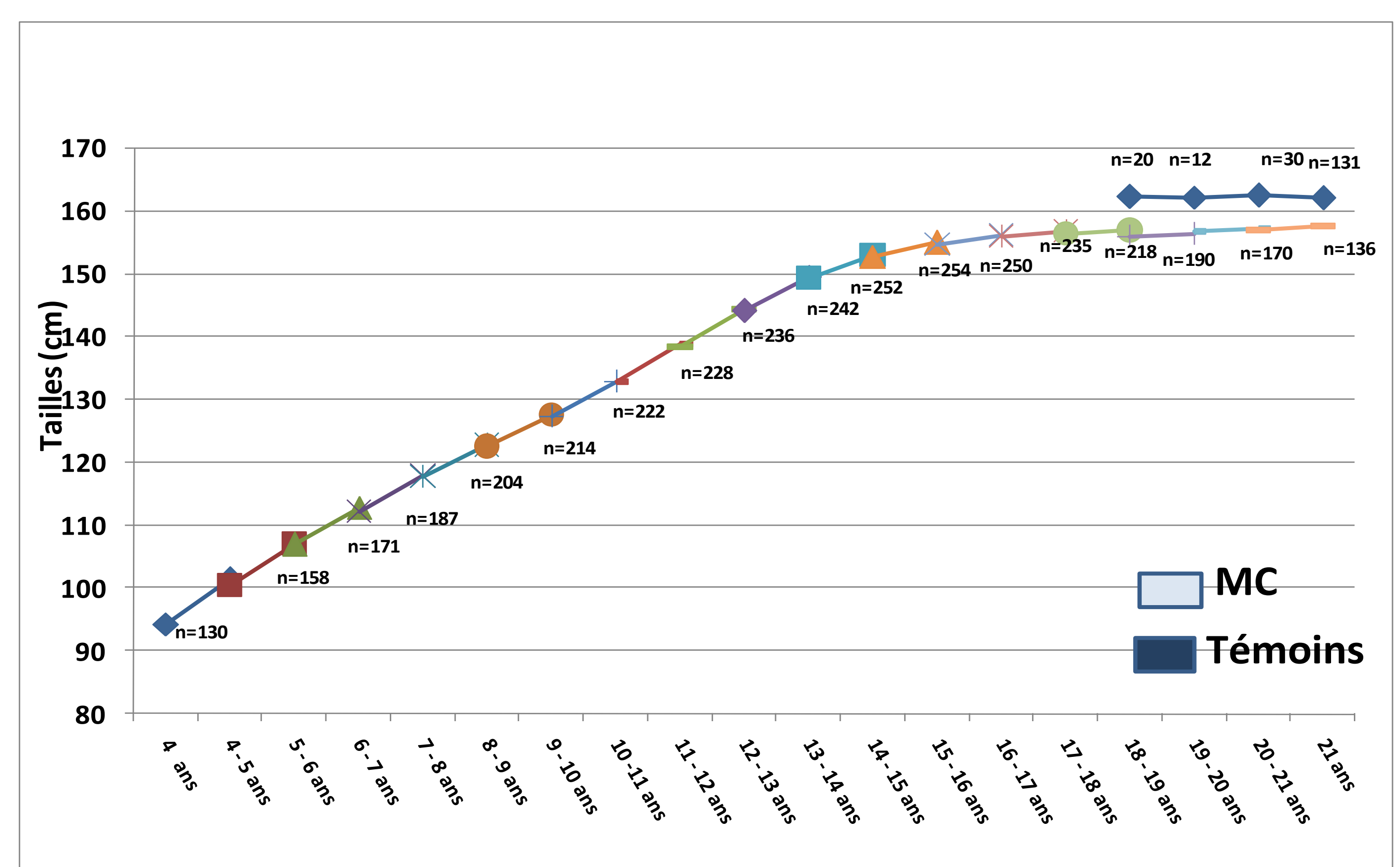
The mean final height was 170, 28 ± 7, 5 cm (194 men CD) and 172, 53 ± 6,8 cm (200 controls: p < 0.09).

Semi longitudinal study of growth at the CD girls case-control study (Controls: Celiac sisters)

Semi longitudinal study of growth at the CD boys case-control study (Controls: Celiac



The mean adult height was 170, 28 ± 7, 5 cm (194 boys CD) and 172, 53 ± 6,8 cm (200 controls: p < 0.09).



The mean adult height was: 158, 42 ± 6, 3 cm (269 girls CD) vs 162, 17 ± 6, 3 cm (193 controls :p<0, 0001).

Conclusion

Growth and final Height are delayed especially in the CD girls.

