

Growth patterns in non-syndromic childhood overweight: comparing children with early of late onset weight gain

Alina German^{1,3}, Yulia Vaisbourd¹, Kerstin Albertsson-Wikland², Lars Gelander², Anton Holmgren², Aimon Niklasson², Ze'ev Hochberg³

¹Pediatric Endocrinology, Clalit HMO and Bnei Zion Medical Center, Haifa, Israel

²Sahlgrenska Academy at the University of Gothenburg, Sweden,

³Technion – Israel Institute of Technology, Haifa, Israel

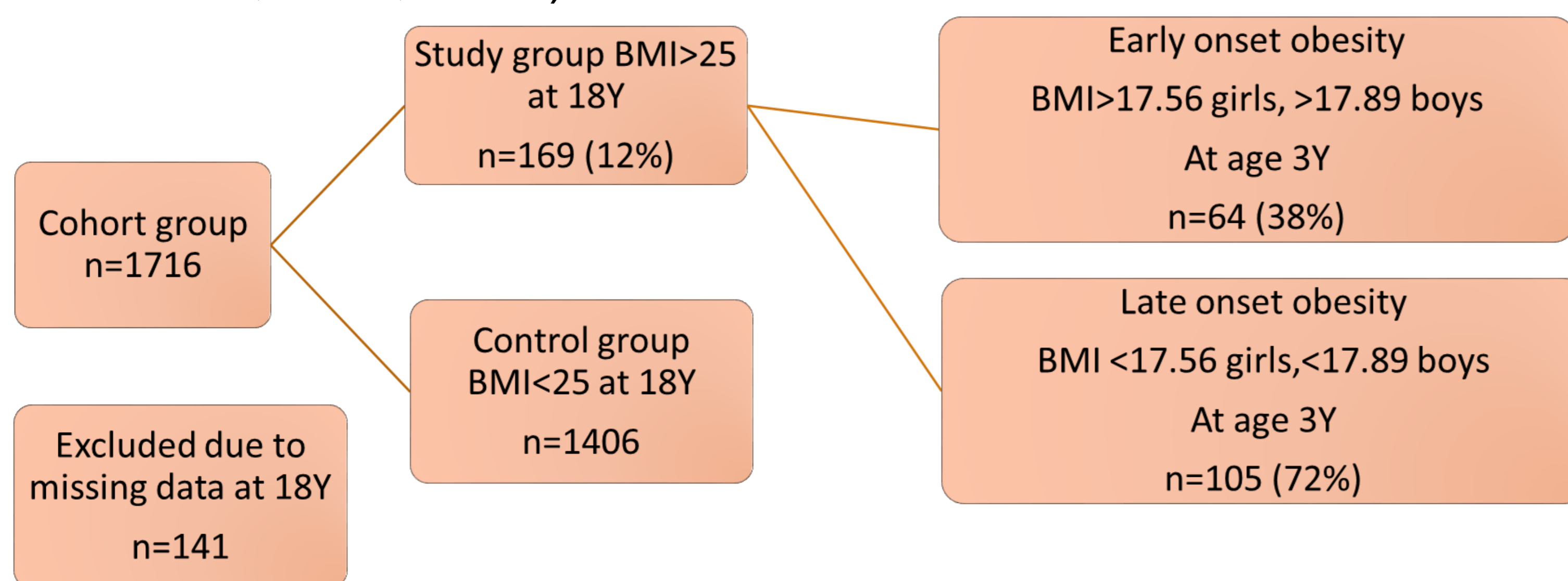
BACKGROUND

- A rapid weight gain during infancy increases adult lean body mass, whereas weight gain during adiposity rebound at age 4-7 years results in increased adult fat mass and an increased risk of the metabolic syndrome and T2D.
- To understand the impact of age of obesity onset on growth, we classified non-syndromic childhood overweight into an early onset (EO, age 0-3) and a late onset (LO, age 3-7) group and characterized the growth patterns of the two.

METHODS

Study population:

A retrospective study based on the "Grow up Gothenburg" 1974 cohort of children born in Sweden. (Holmgren A et al BMC Pediatrics 2017) International cut off points for BMI for overweight by sex at age 2-18 years defined to pass through body mass index of 25 at age 18 and through BMI 17.56 for girls and 17.89 for girls at age 3 years. (Tim J Cole, BMJ, 2000)



Growth periods according to the life history theory were defined as:

- 1- infancy, 4-8 month
- 2- childhood 1.5-3.5Y
- 3- Juvenility 7-9y girls
- 4- adult height >16Y girls, >17Y boys

CONCLUSION and DISCUSSION

During the 1.8 Myr of a hunter-gatherers (HGs) lifestyle, physical activity was intense and metabolic fuels were high in animal protein and low in CHO, the genome of HGs was adapted for low insulin sensitivity. Owing to severe seasonal food shortages, the 'thrifty' HG genome was preserved until the 'escape from hunger' in the past 200 years.

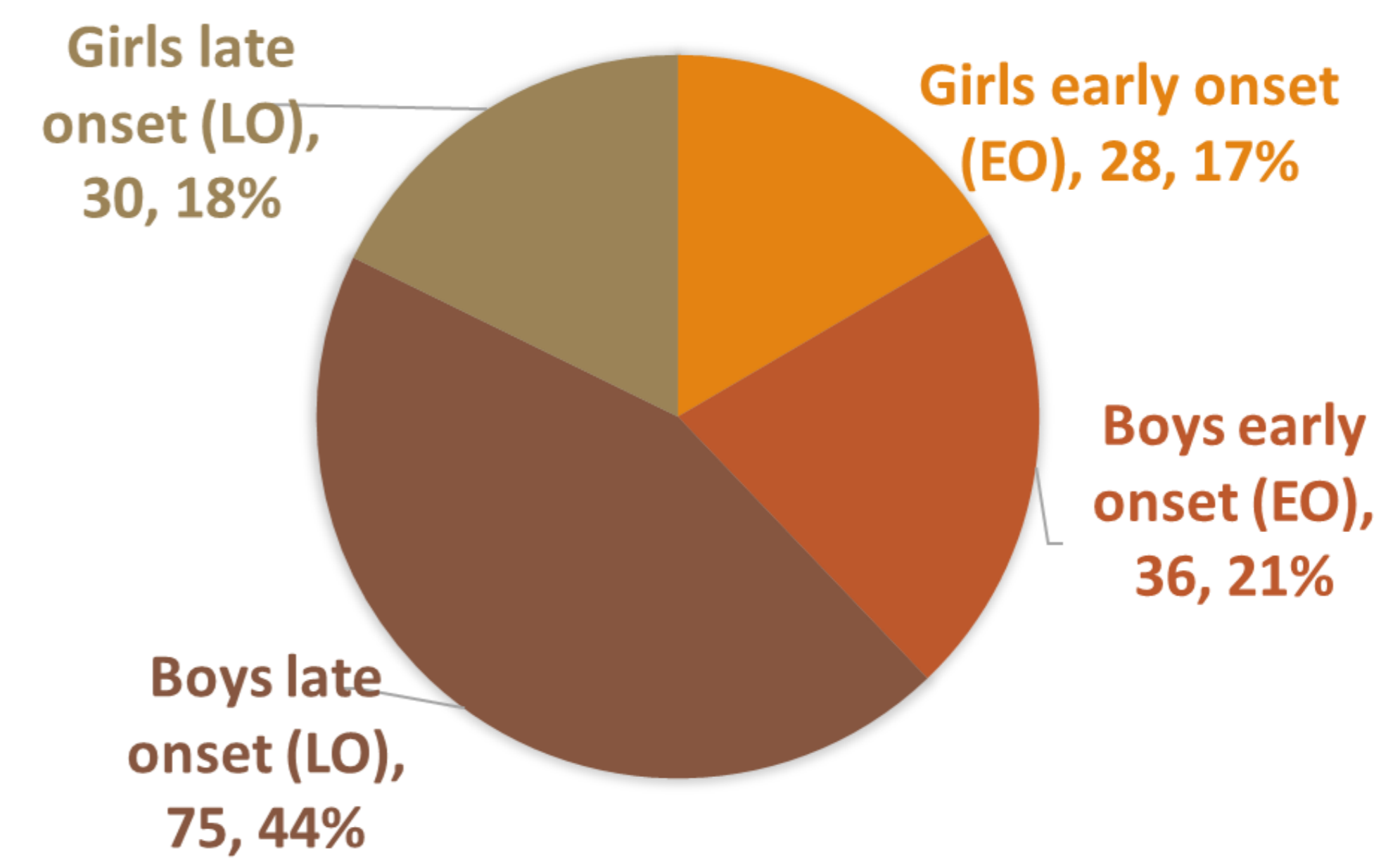
The agrarian epoch 12 000 years ago characterized by a transition to a sedentary lifestyle, and the consumption of a high-CHO and low protein diet, which required the genome to adapt to low activity levels and high insulin sensitivity.

Obesity in individuals with a HG genome (more males) starts after the age of 3 years and is likely to develop into metabolic syndrome and type 2 diabetes mellitus. **Late onset** obesity is best treated with a HG routine: increase physical activity and **low** CHO and high protein diet.

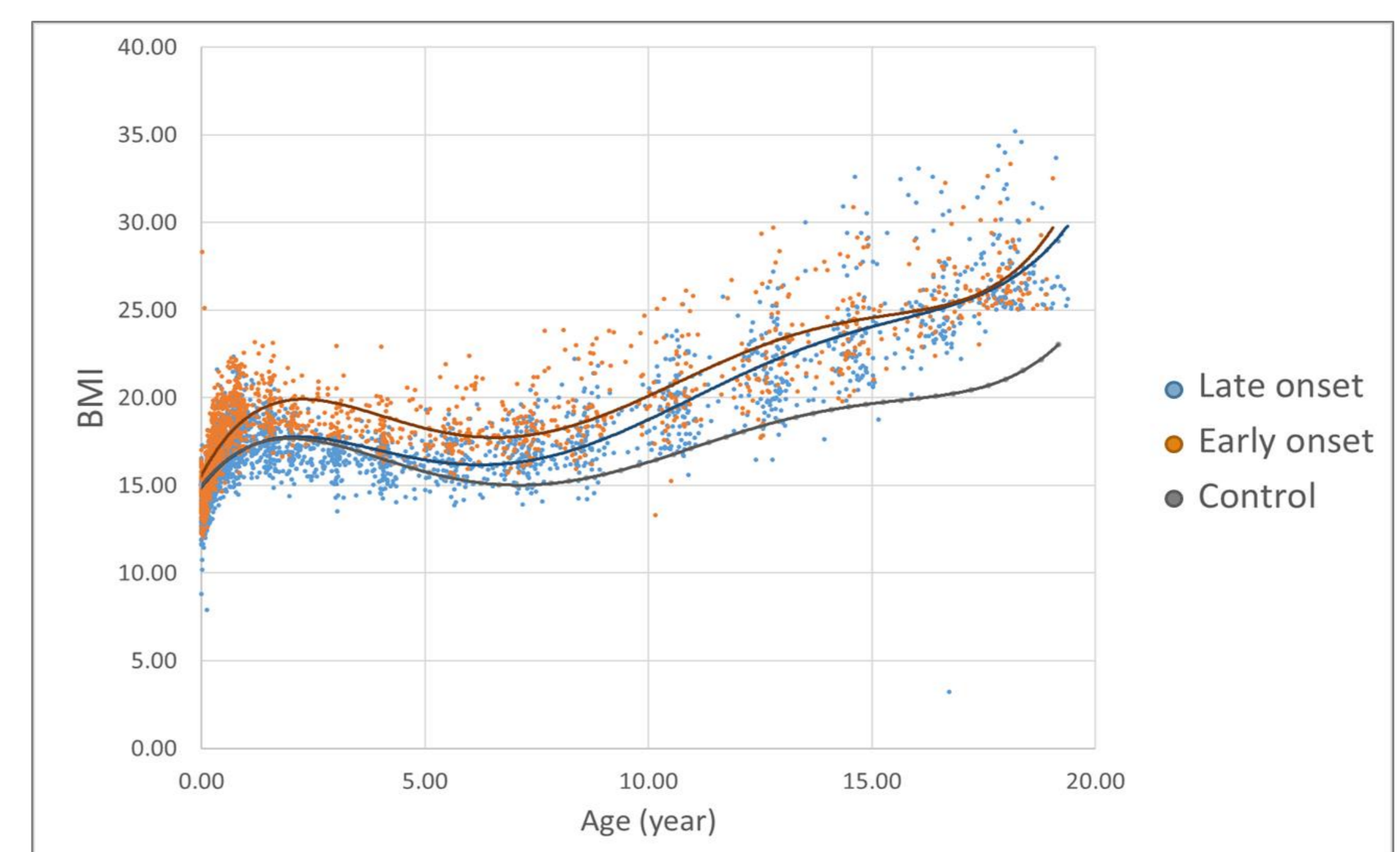
Obesity in individuals (more females) with an adapted farmer genome has its onset within the first 6 months of life, and is unlikely to develop into metabolic syndrome and type 2 diabetes mellitus. In this instance, obesity is best treated with a low-calorie diet. **Early onset** is associated with taller stature.

RESULTS

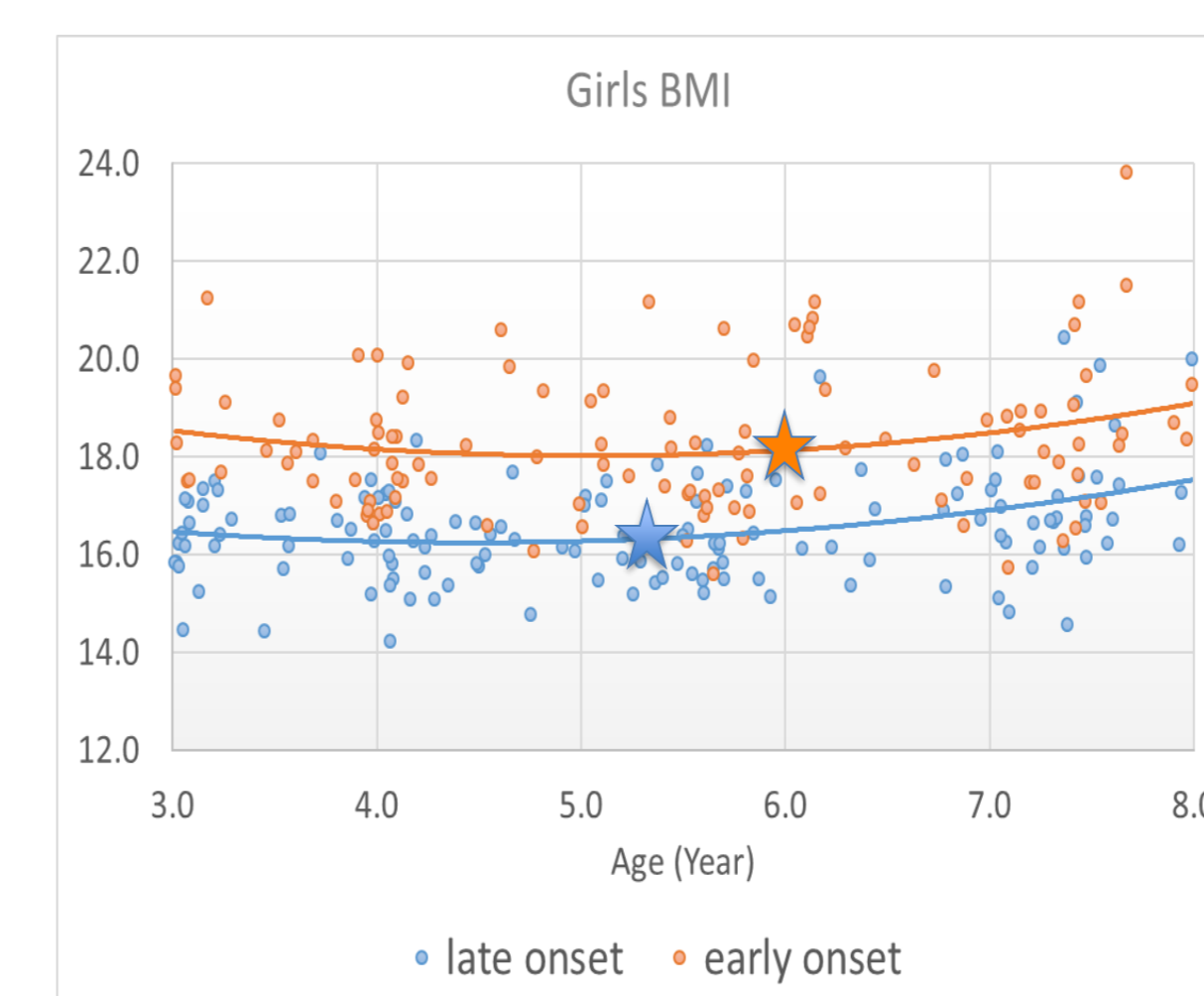
Study participants divided according to their sex and obesity onset age.



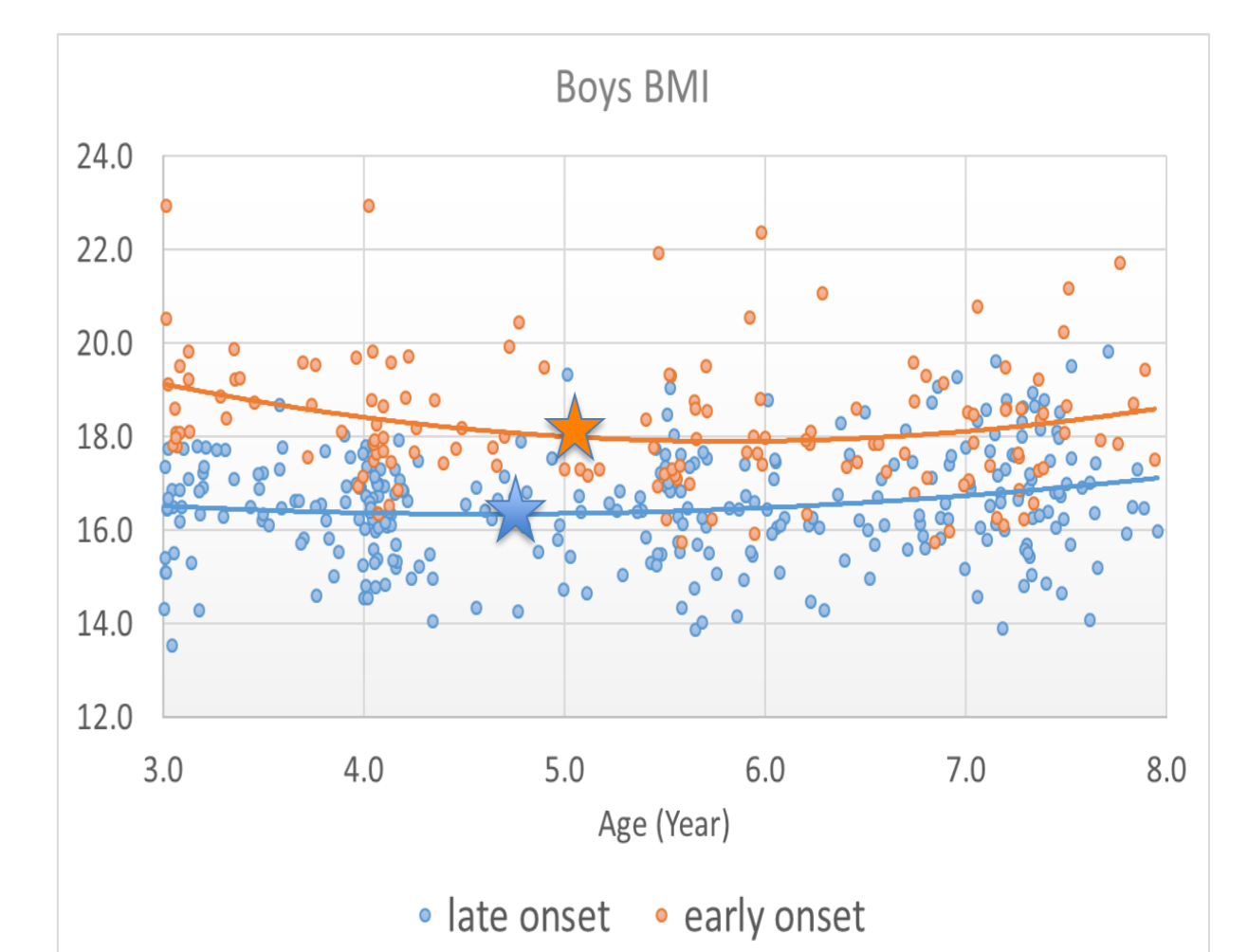
BMI by age for the study and the control groups



Adiposity rebound age in EO and LO obesity according to sex..



Adiposity rebound: Early onset – $6 \pm 1.7Y$
Late onset – $5.3 \pm 2.2Y$
P value = 0.017



Adiposity rebound: Early onset – $5 \pm 1.55Y$
Late onset – $4.7 \pm 2.1Y$
P value = 0.73

Table 1. Height in EO and LO girls during life history growth periods

| Height (cm) | EO | LO | Control | P Value |
|------------------|-----------|-----------|-----------|---------|
| Infantile height | 65.9±1.9 | 65.6±2.67 | 65.7±2.2 | 0.73 |
| Childhood height | 89.6±5.5 | 89.2±5.3 | 89.7±4.2 | 0.32 |
| Juvenile height | 131.9±5.7 | 128.6±7.1 | 129.1±5.6 | 0.015 |
| Adult height | 168.2±6.0 | 165.4±7.2 | 167.8±5.9 | 0.046 |
| Mother height | 169.3±5.0 | 163.6±5.9 | 166.5±5.6 | 0.005 |

SUMMARY

- The EO group had relatively more girls, they were more affected by obesity than the LO group and had later adiposity rebound.
- From juvenility onwards and at final height, girls of the EO group, and also their mothers, were taller than girls of the LO group.
- The timing of onset of overweight can be used to distinguish between obese children who are likely (LO) or unlikely (EO) to embark on a trajectory, which leads to insulin resistance, the metabolic syndrome, and T2D.