



# Bone Mass and Fracture Prevalence in Childhood Brain Cancer Survivors 2, 5 or 7 years after off therapy



Annalisa Gallizia<sup>1</sup>, Vera Mauro<sup>1</sup>, Marco Crocco<sup>1</sup>, Anna Elsa Maria Allegri<sup>2</sup>, Flavia Napoli<sup>2</sup>, Maria Luisa Garrè<sup>3</sup>, Mohamad Maghnie<sup>1</sup>, Di Iorgi Natascia<sup>1</sup>

<sup>1</sup>Department of Pediatrics, Giannina Gaslini Institute, University of Genoa; <sup>2</sup>Department of Pediatrics, Giannina Gaslini Institute; <sup>3</sup>Department of Neuro-oncology, Giannina Gaslini Institute

## BACKGROUND and AIM

Multifaceted risk factors impair bone mass (BM) in childhood brain cancer survivors (CBCS), yet their impact on bone mineral density (BMD) and the potential for recover of BM over time are still unclear. Aims of the study were to evaluate bone mass and its determinants and fracture prevalence in CBCS 2 (G+2), 5 (G+5) or 7 (G+7) years after off therapy (OT).

## SUBJECTS and METHODS

### CBCS subjects

- G+2: n=73, 36 F and 37 M, mean age 12.9±4.2 yrs;
- G+5: n=87, 38 F and 49 M, mean age 14.9±4.4 yrs;
- G+7: n=66, 29 F and 37 M, mean age 16.6±4.4 yrs;
- Diagnoses:
  - astrocytic tumors (G+2:n=25,G+5:n=24,G+7:n=20)
  - embryonal tumors (G+2:n=19,G+5:n=28,G+7:n=20)
  - germinomas (G+2:n=13,G+5:n=18,G+7:n=12)
  - sellar region tumors (G+2:n=13,G+5:n=10,G+7:n=9)
  - ependimomas (G+2:n=3,G+5:n=7,G+7:n=5)
- Radiotherapy:
  - CRT G+2: n=38/73, mean total dose 45.7±13.5 Gy  
G+5: n=44/87, mean total dose 44.7±14.0 Gy  
G+7: n=33/66, mean total dose 45.1±14.2 Gy
  - CSRT G+2: n=27/73, mean total dose 31.0 ±14.3 Gy  
G+5: n=37/87, mean total dose 31.9 ±12.4 Gy  
G+7: n=27/66, mean total dose 30.3±10.0 Gy
- Hormone defects:
  - Growth hormone deficiency (GHD) n=38 (G+2), n=67 (G+5), n=46 (G+7)
  - Hypogonadism (HH) n=15 (G+2), n=28 (G+5), n=22 (G+7)

**Study design:** monocentric cross-sectional observational study

**Methods:** All patients underwent:

- height (cm, SDS), BMI (SDS), pubertal (Tanner stage) evaluation
- DXA (Lunar Prodigy Advance, GE) measurements for:
  - BMD (g/cm<sup>2</sup>, Z-score), BMC (g) at the lumbar spine (L1-L4=L) and at the total body less head (TB); lumbar BMAD (g/cm<sup>3</sup>) was calculated;
  - fat (FM, Kg) and lean mass (LM, Kg)

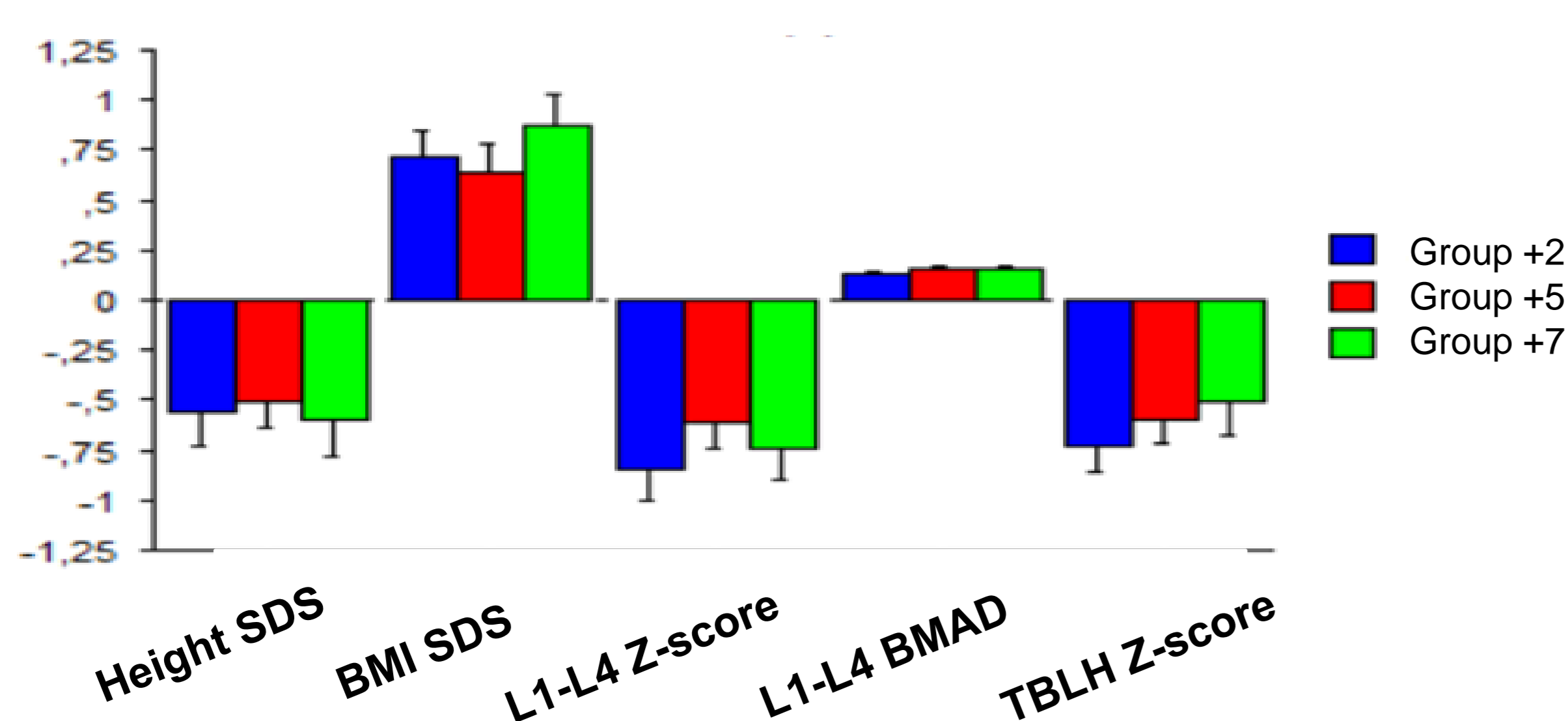
## RESULTS

**Table 1. Age, clinical and body composition characteristics of CBCS 2, 5 or 7 yrs after OT in females and males**

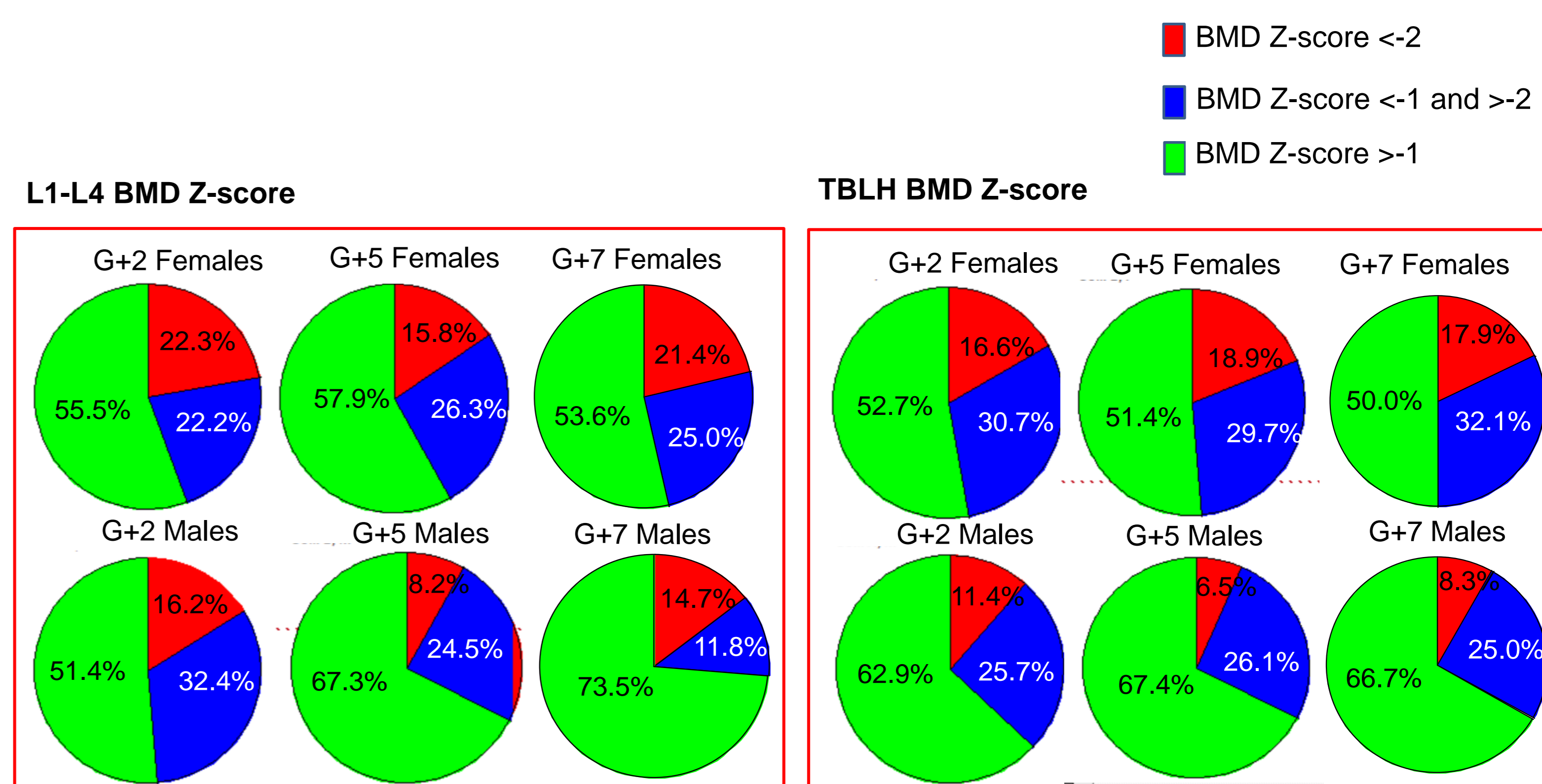
	G+2 Females M ± SD, n=36	G+2 Males M ± SD, n=37	G+5 Females M ± SD, n=38	G+5 Males M ± SD, n=49	G+7 Females M ± SD, n=29	G+7 Males M ± SD, n=37
Age at DGN (yrs)	8.2 ± 4.4	9.1 ± 4.2	7.7 ± 4.2	8.2 ± 4.5	7.3 ± 4.1	7.4 ± 4.3
Age at OT (yrs)	10.3 ± 4.2	11.5 ± 4.2	9.5 ± 4.7	10.2 ± 4.1	9.0 ± 4.3	9.9 ± 4.6
Age at DXA (yrs)	12.3 ± 4.2	13.5 ± 4.2	14.5 ± 4.8	15.2 ± 4.2	16.1 ± 4.3	17.0 ± 4.6
Ht (SDS)	-0.7 ± 1.4*	-0.4 ± 1.6	-0.9 ± 1.1**	-0.2 ± 1.3	-0.8 ± 1.4	-0.5 ± 1.5
BMI (SDS)	0.8 ± 1.2*	0.7 ± 1.1	0.7 ± 1.4*	0.6 ± 1.2	0.9 ± 1.3*	0.9 ± 1.2
Fat Mass (kg)	20.4 ± 12.2	19.8 ± 8.5	20.8 ± 10.6	19.0 ± 8.5	24.4 ± 11.5	25.9 ± 13.5
Fat Mass (%)	44.6 ± 7.2**	39.7 ± 8.7	44.5 ± 6.7**	35.2 ± 7.9	44.6 ± 5.5**	36.7 ± 8.0
Lean Mass (kg)	23.4 ± 10.3**	30.6 ± 13.5	24.6 ± 9.5**	34.1 ± 11.0	28.6 ± 10.3**	38.9 ± 13.1
Tanner PP; P (n, %)	8; 28 (22.2; 77.7)	11; 26 (29.7; 70.3)	8; 30 (21.0; 78.9)	9; 40 (18.4; 81.6)	3; 26 (10.3; 89.7)	4; 33 (10.8; 89.2)
Fractures (n, %)	4 (11.1)	1 (2.7)	2 (5.3)	0	1 (3.4)	0

P-value: \* $<0.05$  (F vs M); \*\* $<0.0001$  (F vs M); PP=prepubertal, P=pubertal

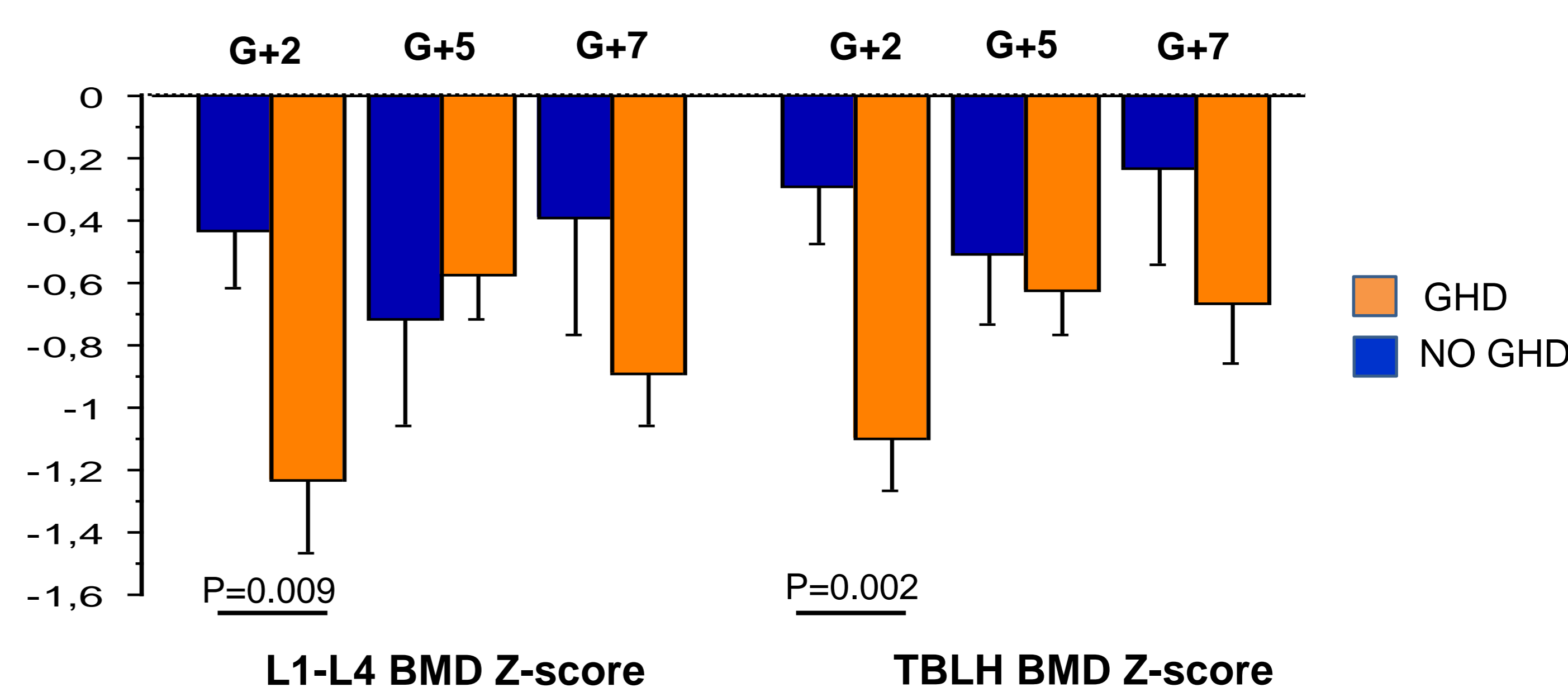
**Figure 1. Height SDS, BMI SDS, L1-L4 and TBLH BMD Z-score in Groups +2, +5 and +7 CBCS**



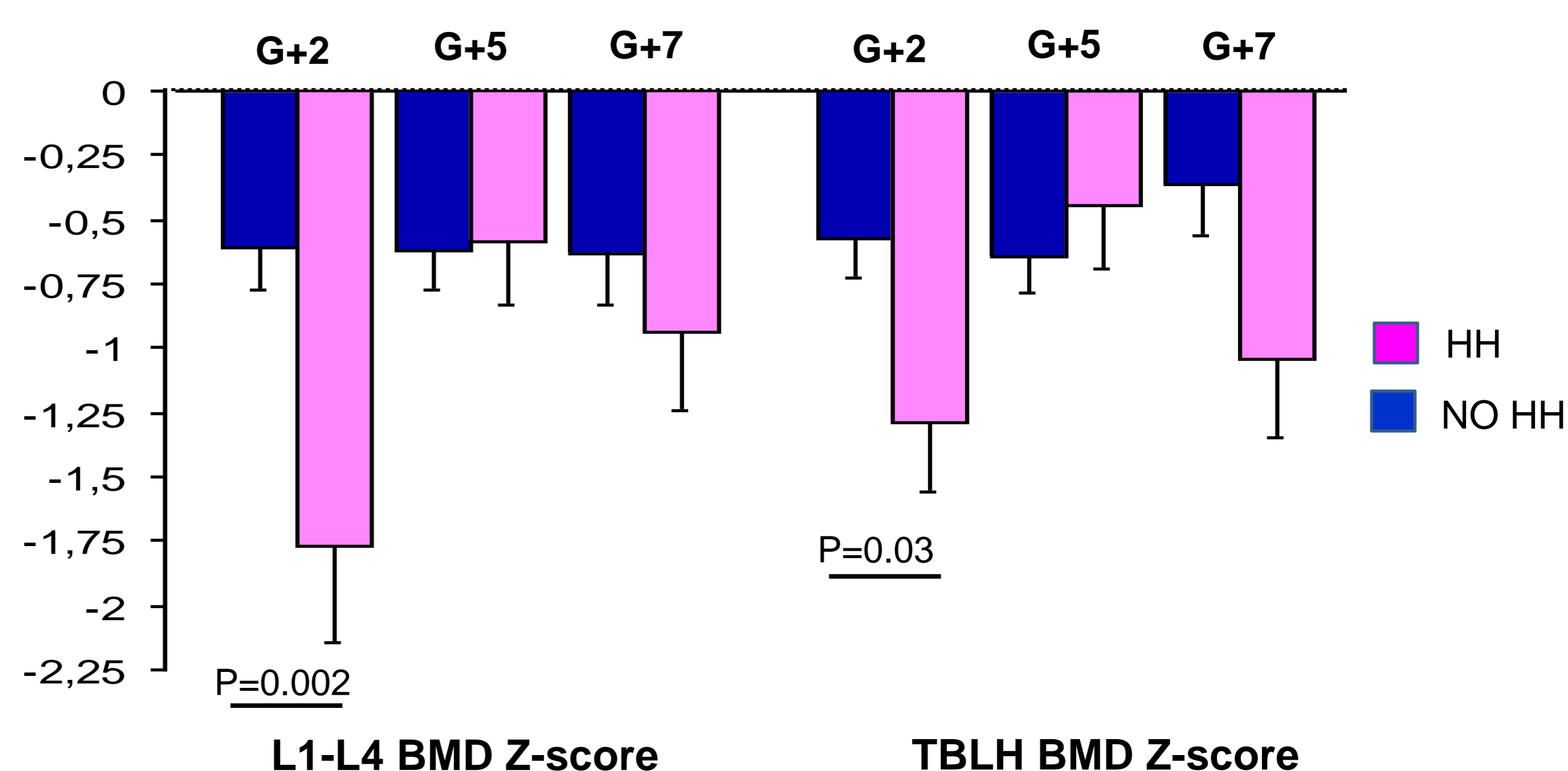
**Figure 2. BMD Z-score distribution based on OT and gender**



**Figure 3. L1-L4 and TBLH BMD Z-score in GHD and no GHD CBCS in Groups +2, +5 and +7**



**Figure 4. L1-L4 and TBLH BMD Z-score in HH and no HH CBCS in Groups +2, +5 and +7**



**Table 2. Multivariable Regression Analyses for L1-L4 and TBLH BMD Z-score prediction in Groups +2, +5 and +7**

L1-L4 BMD Z-score*	β stand.			P value			Adj.R <sup>2</sup>		
	G+2	G+5	G+7	G+2	G+5	G+7	G+2	G+5	G+7
HH	0.09	0.10	0.11	<0.001	<0.001	0.004	0.351	0.159	0.113
Ht SDS	0.32	0.26	0.33	0.02	ns	ns			

TBLH BMD Z-score*	β stand.			P value			Adj.R <sup>2</sup>		
	G+2	G+5	G+7	G+2	G+5	G+7	G+2	G+5	G+7
Ht SDS	0.07	0.08	0.11	<0.001	0.002	ns	0.835	0.428	0.229
Lean Mass	0.01	0.01	0.02	ns	<0.001	0.009			

\* After correction for gender, GHD, HH, height SDS, %fat mass, lean mass

## CONCLUSIONS

- Older, shorter, GHD and HH CBCS are at risk of decreased BM after 2 yrs OT
- A low BMD for age and sex (< -1 Z-score) persists at both L1-L4 and TBLH sites up to 7 years after OT, in particular in females
- However, the fracture prevalence remains low
- Strategies to optimize height should be undertaken:
  - early diagnosis and treatment of GHD and HH
  - optimization of lean mass.

